

Name: \_\_\_\_\_

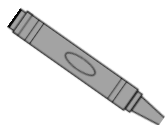
Date: \_\_\_\_\_

Color Long E red.

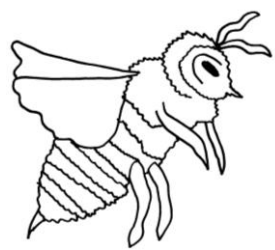


E

Color Silent E gray.

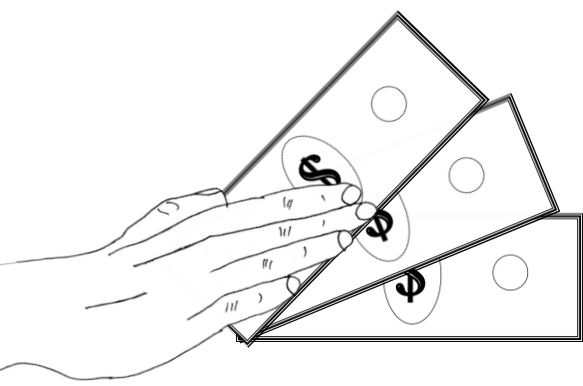


E



BEE

bee



FEE

fee



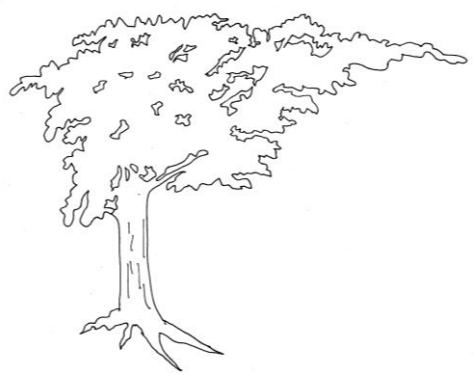
SEE

see



FREE

free




TREE

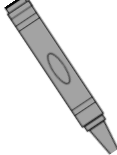
tree


Diphthong EE

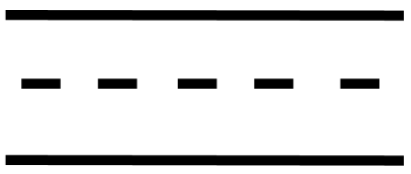
Name: \_\_\_\_\_

Date: \_\_\_\_\_

Color Long E  
red.  E

Color Silent E  
gray.  E

Color SH  
pink.  SH



**STREET**

street



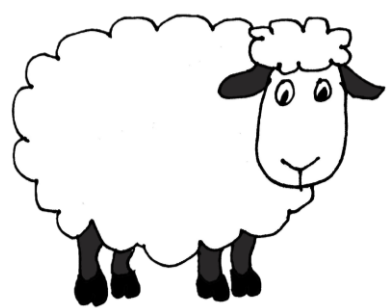
**MEET**

meet



**SLEEP**

sleep



**SHEEP**

sheep



**FEET**

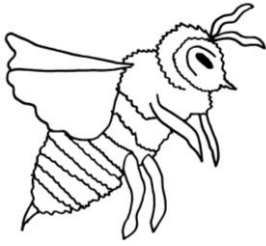
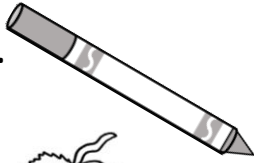
feet

Diphthong EE

Name: \_\_\_\_\_

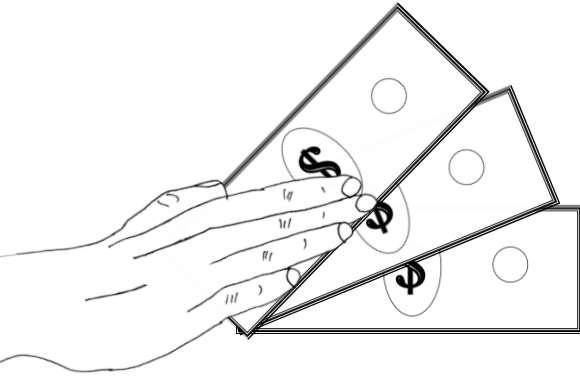
Date: \_\_\_\_\_

Trace the words.



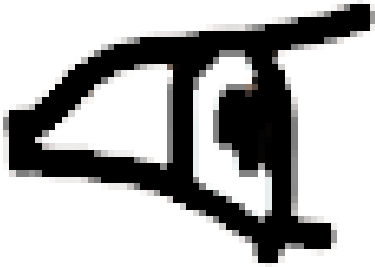
BEE

bee



FEE

fee



SEE

see



FREE

free



TREE

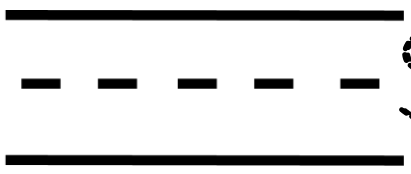
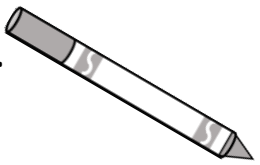
tree

Diphthong EE

Name: \_\_\_\_\_

Date: \_\_\_\_\_

Trace the words.



STREET

street



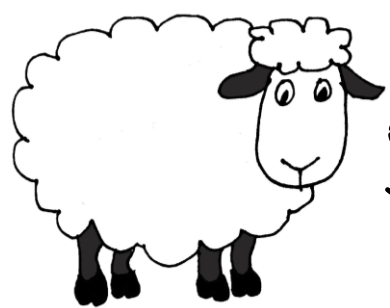
MEET

meet



SLEEP

sleep



SHEEP

sheep



FEET

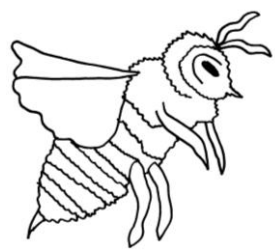
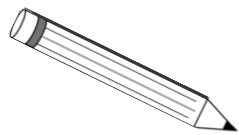
feet

Diphthong EE

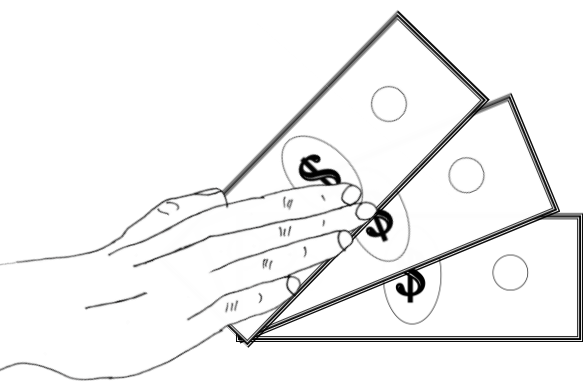
Name: \_\_\_\_\_

Date: \_\_\_\_\_

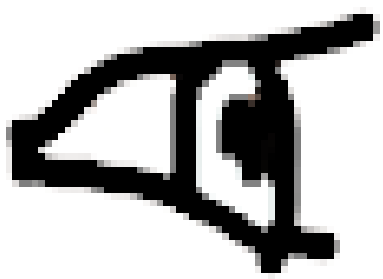
Write the word: one letter in each box.



|  |  |  |
|--|--|--|
|  |  |  |
|--|--|--|



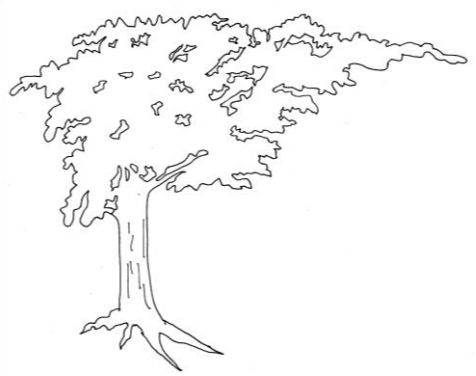
|  |  |  |
|--|--|--|
|  |  |  |
|--|--|--|



|  |  |  |
|--|--|--|
|  |  |  |
|--|--|--|



|  |  |  |  |
|--|--|--|--|
|  |  |  |  |
|--|--|--|--|



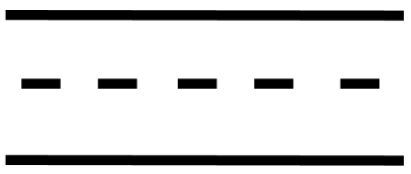
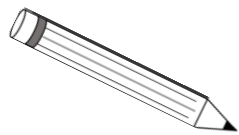
|  |  |  |  |
|--|--|--|--|
|  |  |  |  |
|--|--|--|--|

Diphthong EE

Name: \_\_\_\_\_

Date: \_\_\_\_\_

Write the word: one letter in each box.



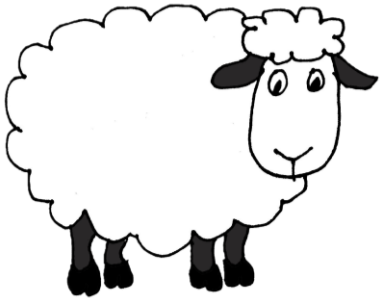
|  |  |  |  |  |  |
|--|--|--|--|--|--|
|  |  |  |  |  |  |
|--|--|--|--|--|--|



|  |  |  |  |
|--|--|--|--|
|  |  |  |  |
|--|--|--|--|



|  |  |  |  |  |
|--|--|--|--|--|
|  |  |  |  |  |
|--|--|--|--|--|



|  |  |  |  |  |
|--|--|--|--|--|
|  |  |  |  |  |
|--|--|--|--|--|



|  |  |  |  |
|--|--|--|--|
|  |  |  |  |
|--|--|--|--|

Diphthong EE

Name: \_\_\_\_\_

Date: \_\_\_\_\_

Color a star for each time the page is read.



## The Queen's Sleep

The queen lay in bed. She did need to get some sleep. The next day she had to meet the prince to see if he will

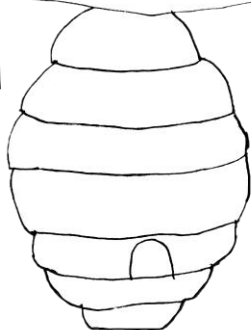


drop his fee for passing ships in his bay and let the queen's ships sail for free. She did try to



think of sheep. She did

try a



fresh sheet. A bee buzzed in

the top of the green tree. A screen did

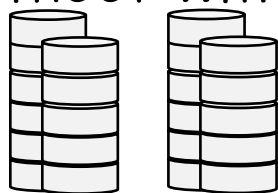


keep the bees in the hive from the

queen's bed. It hung ten feet from the street.

When it was time to wake up, the queen was in a deep sleep. She slept late and did not get to

meet with the prince. So she has to pay the fee



for the ships to pass in his bay.

Diphthong EE