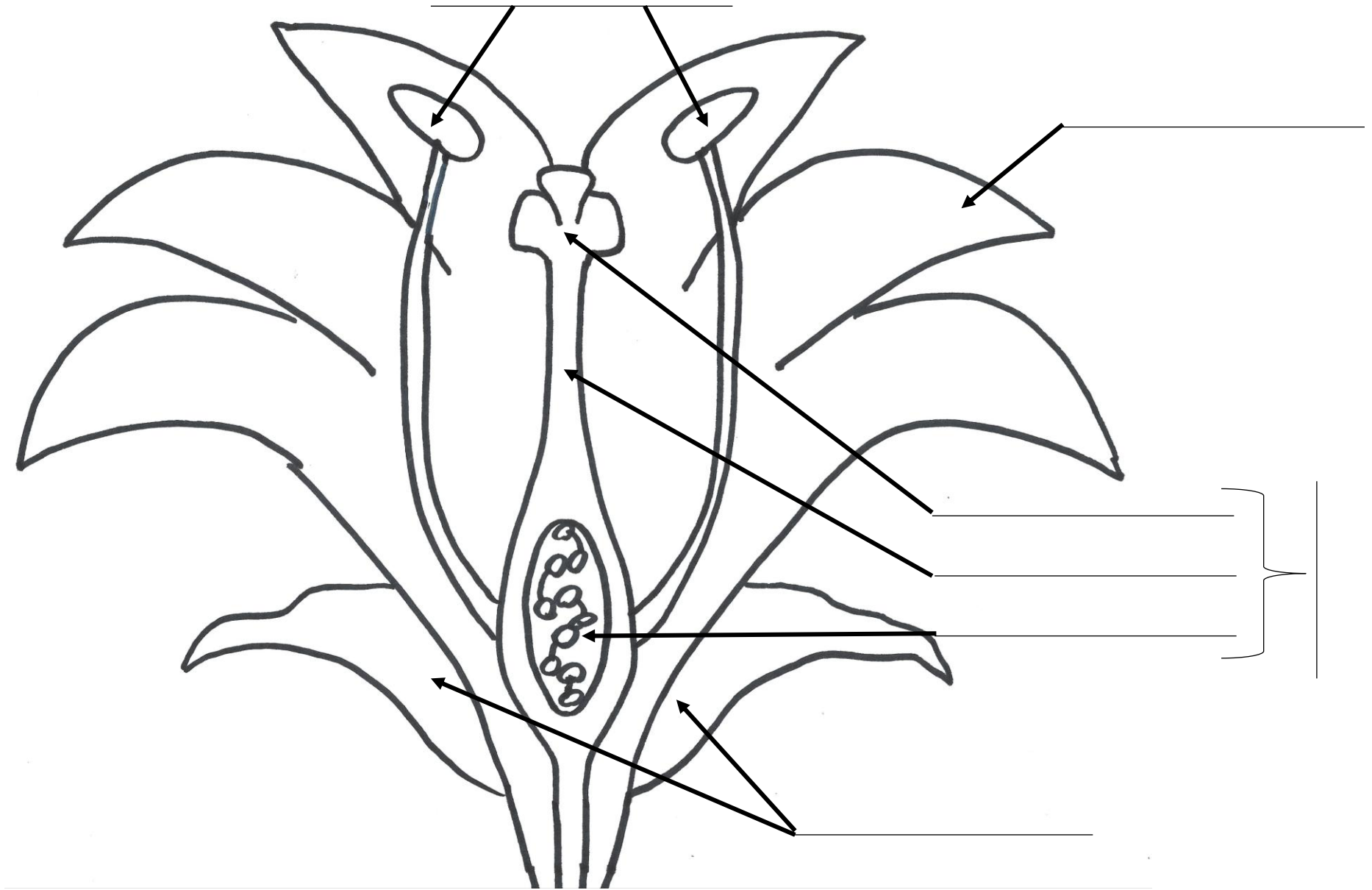


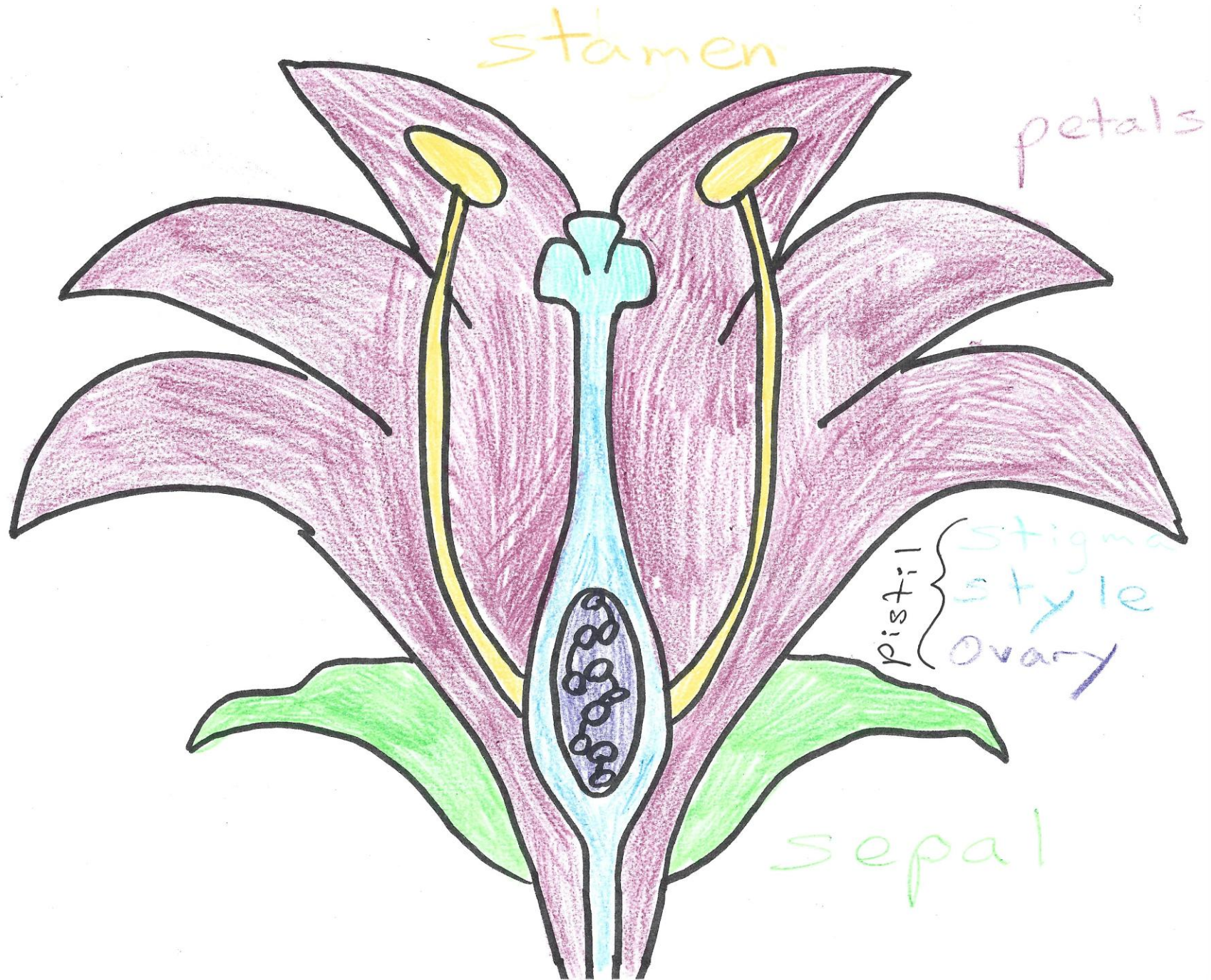
Flower Diagram

- Color the petals red or pink and write “petals” in the same color on the line pointing to them.
- Color the stamen yellow and write “stamen” in the same color on the line pointing to it.
- Color the sepal green and write “sepal” in the same color on the line pointing to it.
- Color the stigma light blue and write “stigma” in the same color on the line pointing to it.
- Color the style medium blue and write “style” in the same color on the line pointing to it.
- Color the ovary dark blue or purple and write “ovary” in the same color on the line pointing to it.
- Trace over the pistil in a thick, black marker and write “pistil” in black sideways next to the bracket.

Flower Diagram

Name: _____





Flower Dissection

Name: _____

stamen

sepal

style

stigma

petals

ovary

As you dissect the flower, cut and glue each piece inside its labeled box.

Flower Observations



Name: _____

	Flower A	Flower B	Flower C	Flower D
Draw a picture of each flower here:				
Color:				
Size in centimeters:				
Number of Petals:				
Attached or Separate Petals				

Which two flowers are the most alike? _____ and _____ How so? _____

Which two flowers are the most different? _____ and _____ How so? _____