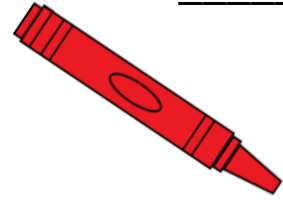


Name: _____

Date: _____

When A comes before RR, it is often long.
Color Long A red.



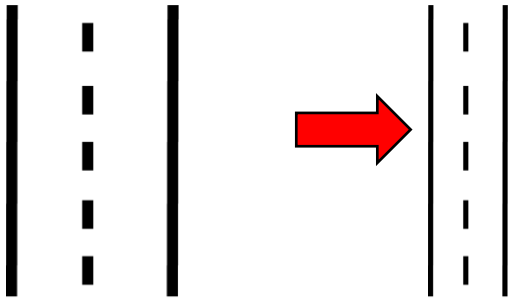
A



marry



carry



now



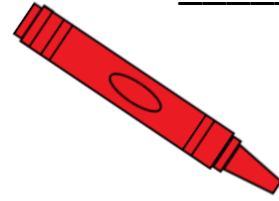
draw

Digraph AR After W

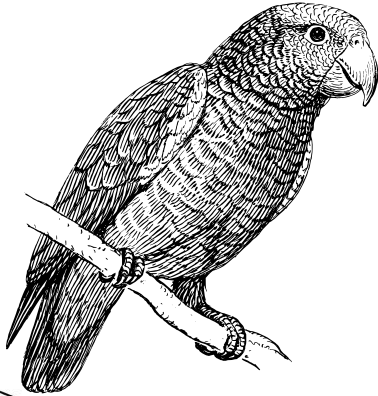
Name: _____

Date: _____

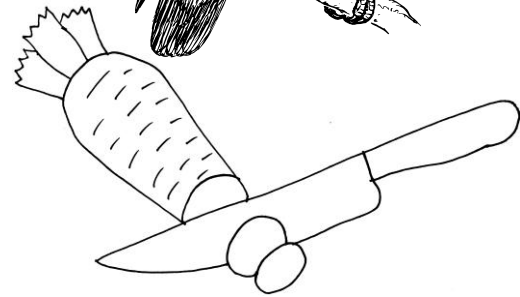
When A comes before RR, it is often long.
Color Long A red.



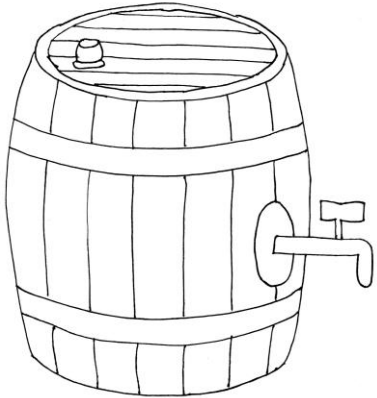
A



par/rot



car/rot



bar/rel



em/bdr/rass

em/bdr/rassed

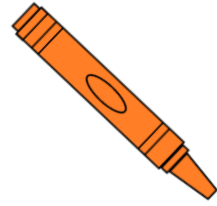
*O, E, and the second A are actually making a SCHWA sound here, however, as the SCHWA sound is not taught until later, reading these as short vowels will allow children to be able to decode the words well enough until the SCHWA lesson.

Digraph AR After W

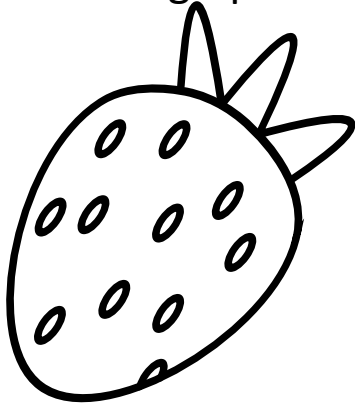
Name: _____

Date: _____

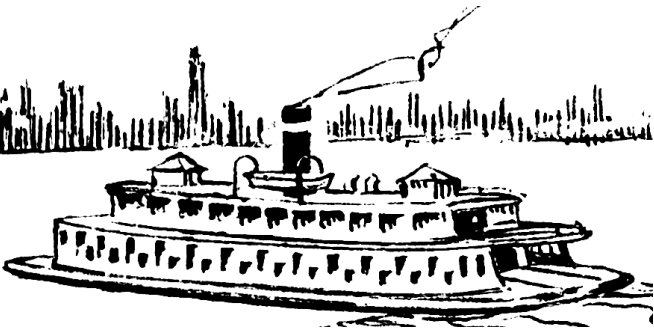
When E comes before RR, it makes the Long A sound. Color Digraph ERR orange.



ERR



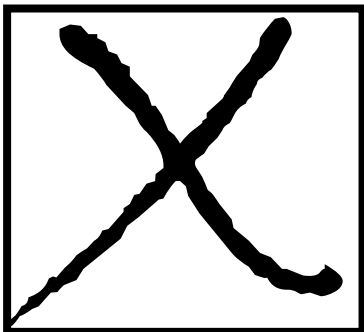
berry



ferry



merry



error

Digraph AR After W

Name: _____

Date: _____

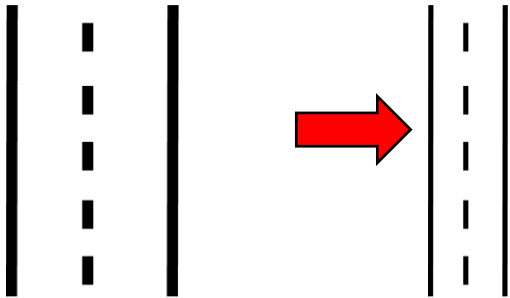
Trace the words.



MARRY



CARRY



NARROW



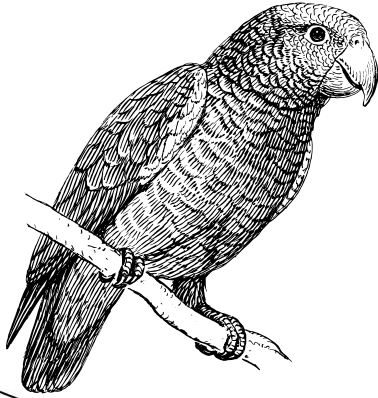
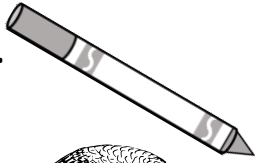
ARROW

Digraph AR After W

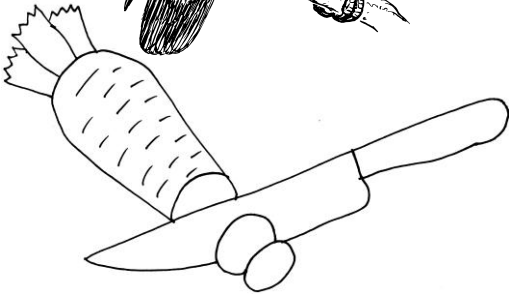
Name: _____

Date: _____

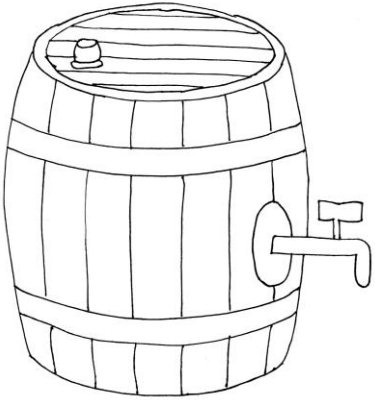
Trace the words.



PARROT



CARROT



BARREL



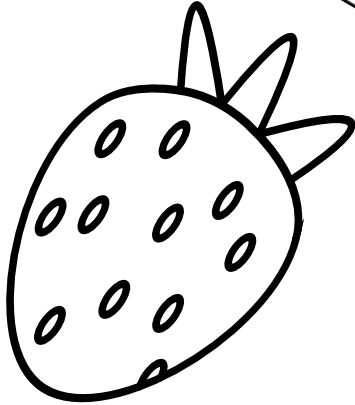
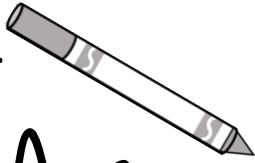
EMBARRASS

Digraph AR After W

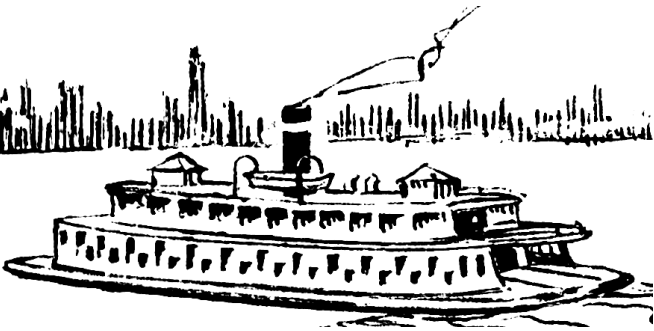
Name: _____

Date: _____

Trace the words.



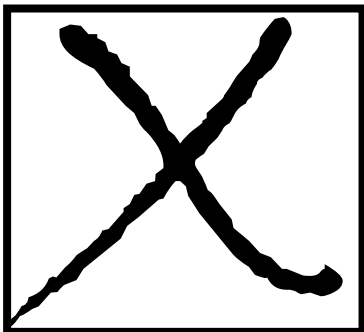
BERRY



FERRY



MERRY



ERROR

Digraph AR After W

Name: _____

Date: _____

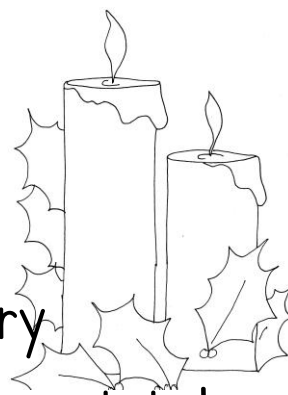
Color a star for each time the page is read.



The Flower Girl



I will be a flow/er girl in the wed/ding of my Aunt Fern. Fern will mar/ry Harry at a very mer/ry time of the year. We must take



a fer/ry to the wed/ding. If we make an er/ror with the time, I think we may have to cross the riv/er in a bar/rel. My flow/er girl dress is the shade of a car/rot. I think I look like a par/rot, but my mom says it is cute. I will car/ry a bas/ket of flow/ers down a nar/row path. I will drop flow/ers on the path.. If I mess



up, I will be very em/bar/rassed.

Af/ter the wed/ding, we will have cake with ber/ry jam and an ar/row on top.

